

INTERIOR WALLS OVER WOOD OR METAL STUDS AND CONCRETE

Foam Core Backer Board

On-Ground or Above-Ground Concrete

Cementitious Self-Leveling Underlayment

Uncoupling Membrane

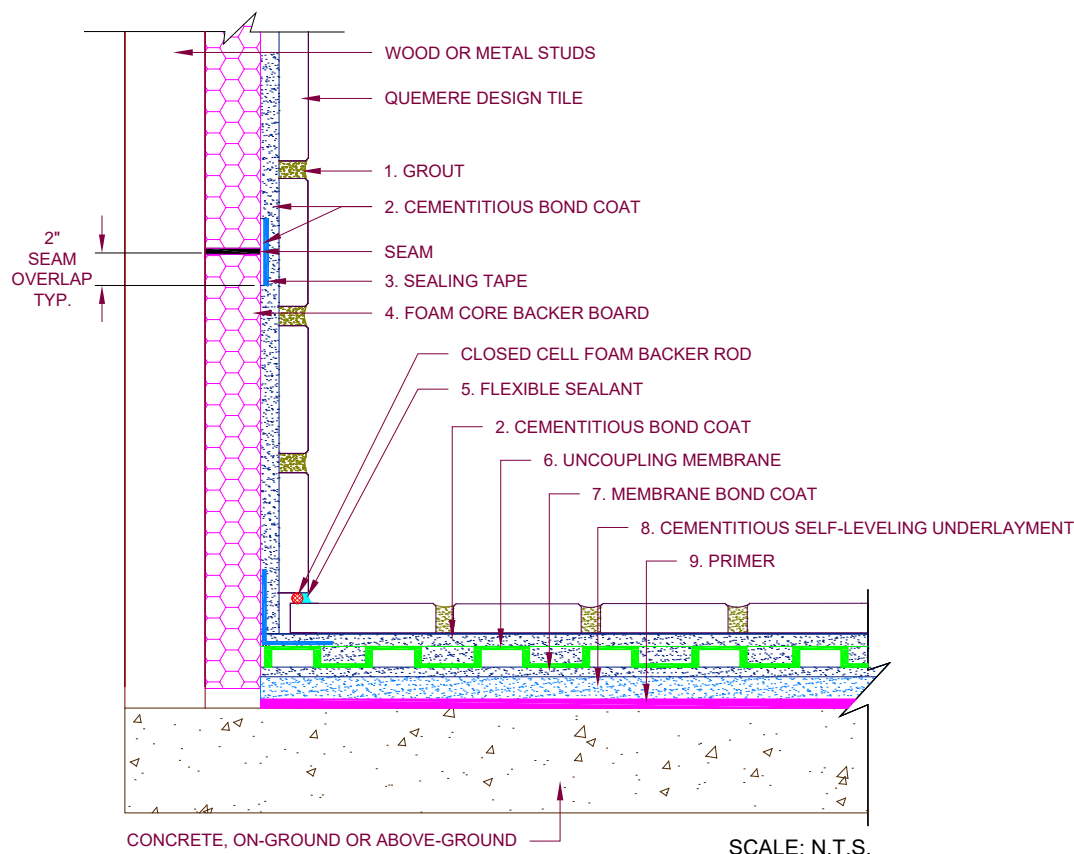
Quemere Design Tile (Ceramic Tile)

11.29.23

Quemere Design Tile

MAPEI: MF205/205A

MW246FCBB



MAPEI Products Assembly	ANSI	ISO 13007	Minimum Performance Requirements from TCNA Guidelines
1. Grout: A. <i>Ultracolor® Plus FA</i>	A118.7, A138.1	CG2WAF	Cementitious Grout: ANSI A118.6 or better, or ISO 13007 CG1 or better
2. Cementitious Bond Coat: A. <i>Keraflex® Super</i>	A118.4HET, A118.11, A118.15HET	C2TES1P1	Cementitious Bond Coat: ANSI A118.4 or better, or ISO 13007 C2S1 or better
3. Sealing Tape: A. <i>Mapeguard® WP ST</i>			Uncoupling Membrane: ANSI A118.12 Section 5.1.3
4. Foam Core Backer Board: A. <i>Mapeguard® Board</i>			Movement Joints: EJ171 and ASTM C1193
5. Flexible Sealant A. <i>Mapesil® T Plus</i> 1) With caulking backer rod and/or bond breaker tape	A108.01, 3.7		Flexible Sealant: ANSI A118.01, 3.7 and ASTM C920
6. Uncoupling Membrane: A. <i>Mapeguard® UM</i>	A118.10, A118.12 Section 5.1.3		Environmental Classifications Res1, 2; Com1, 2 (Walls) Res1; Com1 (Floors)
7. Membrane Bond Coat: A. <i>Keraflex® Super</i>	A118.4HET, A118.11, A118.15HET	C2TES1P1	Materials for Green/Sustainable Design Installation Materials that meet ANSI A138.1, <i>The American National Standard Specifications for Sustainable Ceramic Tiles, Glass Tiles, and Tile Installation Materials.</i>
8. Cementitious Self-Leveling Underlayments: A. <i>Novoplan® 2 Plus</i> B. <i>Novoplan® HFL</i>			
9. Primer: A. <i>ECO Prim Grip™</i>			

CAD details and/or specifications are provided as guides. They are intended to assist in the proper detailing or specifying of a project. They are not to scale or intended for construction. The guide specification must be reviewed for code compliance and edited to make it project specific. Drawings are based on the Tile Council of North America's (TCNA) Handbook for Ceramic, Glass, and Stone Tile Installation and the Terrazzo, Tile and Marble Association of Canada's (TTMAC) Tile Installation Manual. MAPEI products are listed as options and are substituted for TCNA's and TTMAC's listed ANSI and ISO (ISO 13007) standards. For natural stone tiles, refer to Natural Stone Institute, TCNA Natural Stone Tile Selection and Installation Guide and consult stone tile supplier for suitability. Please refer to the referenced handbooks and current data sheets for complete instructions and application limitations. Some installation methods and component materials may not be referenced. MAPEI encourages the user to consult all approved resources to ensure a complete assembly.



MAPEI Corporation
1144 E. Newport Center Drive
Deerfield Beach, FL 33442
Phone: 1-800-992-6273

